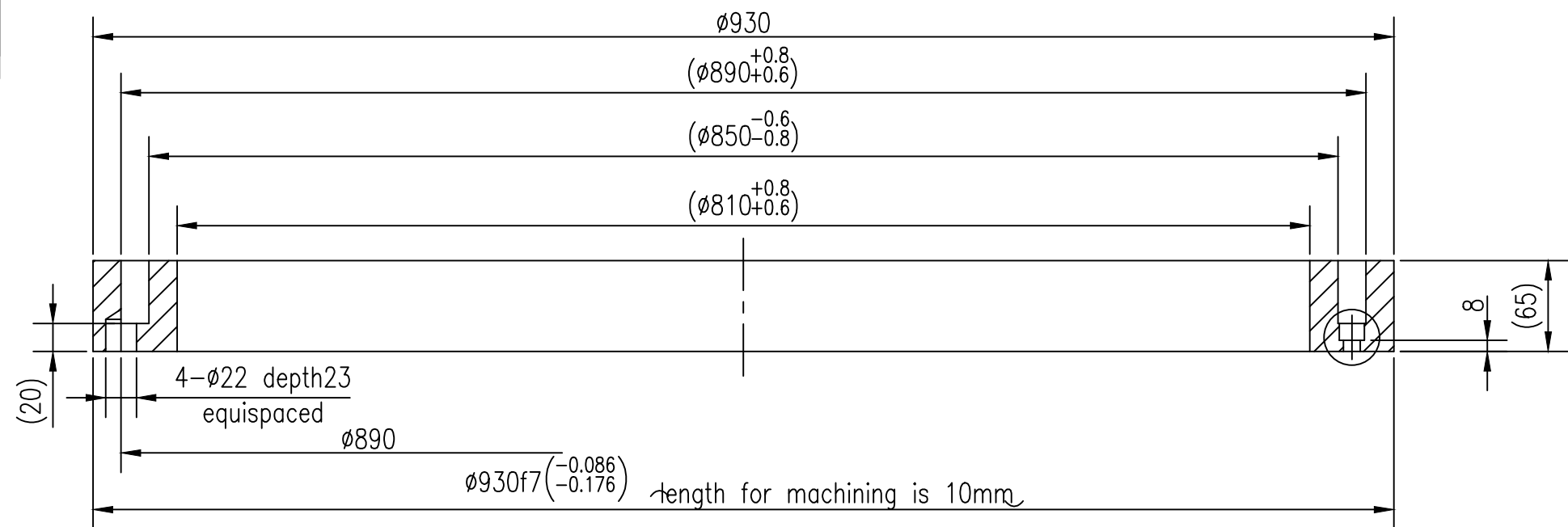
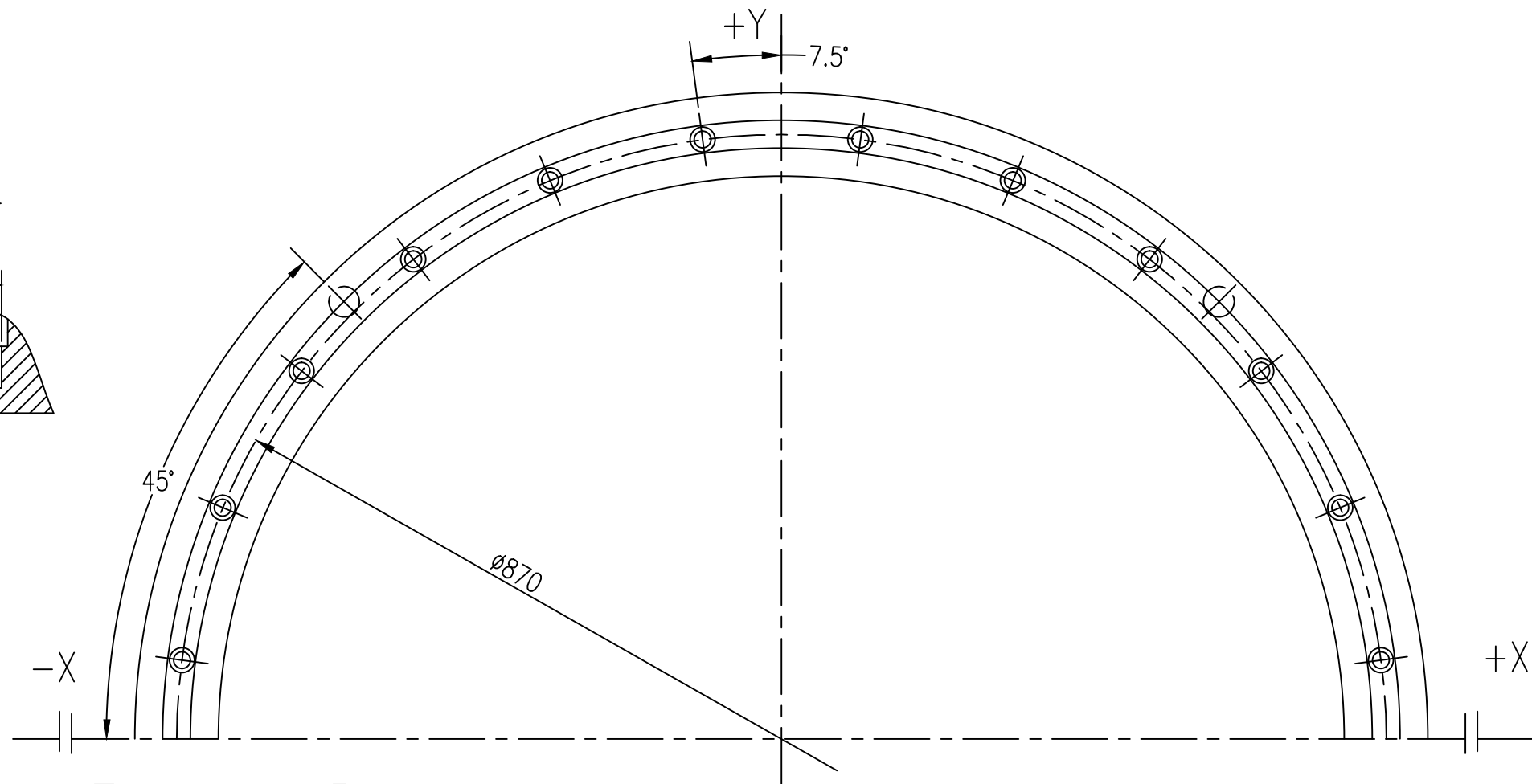
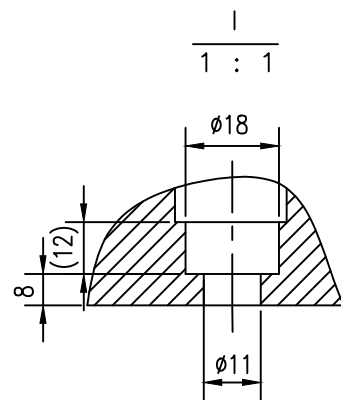


H10011.1-04



Others



### Technical Requirements

1. The casting should measure up GB6967-86°
2. All sharp eadges should be chamferde with 1X45°°
3. The sizes bracketed should keep margin for fine machining of draft connecting tube.

TAG	NUM	FILE-NO	SIGN	DATE
DESIGNED				
CHECKED			APPROVED	
VERIFIED				
			DATE	2011.03

Rear Seal Ring

ZG1Cr18Ni9Ti

H10011.1-04

D-TAG		MASS		RATIO	
S	A		63		1:4

OF

ZHEJIANG JINLUN ELECTROMECHANIC CO., LTD