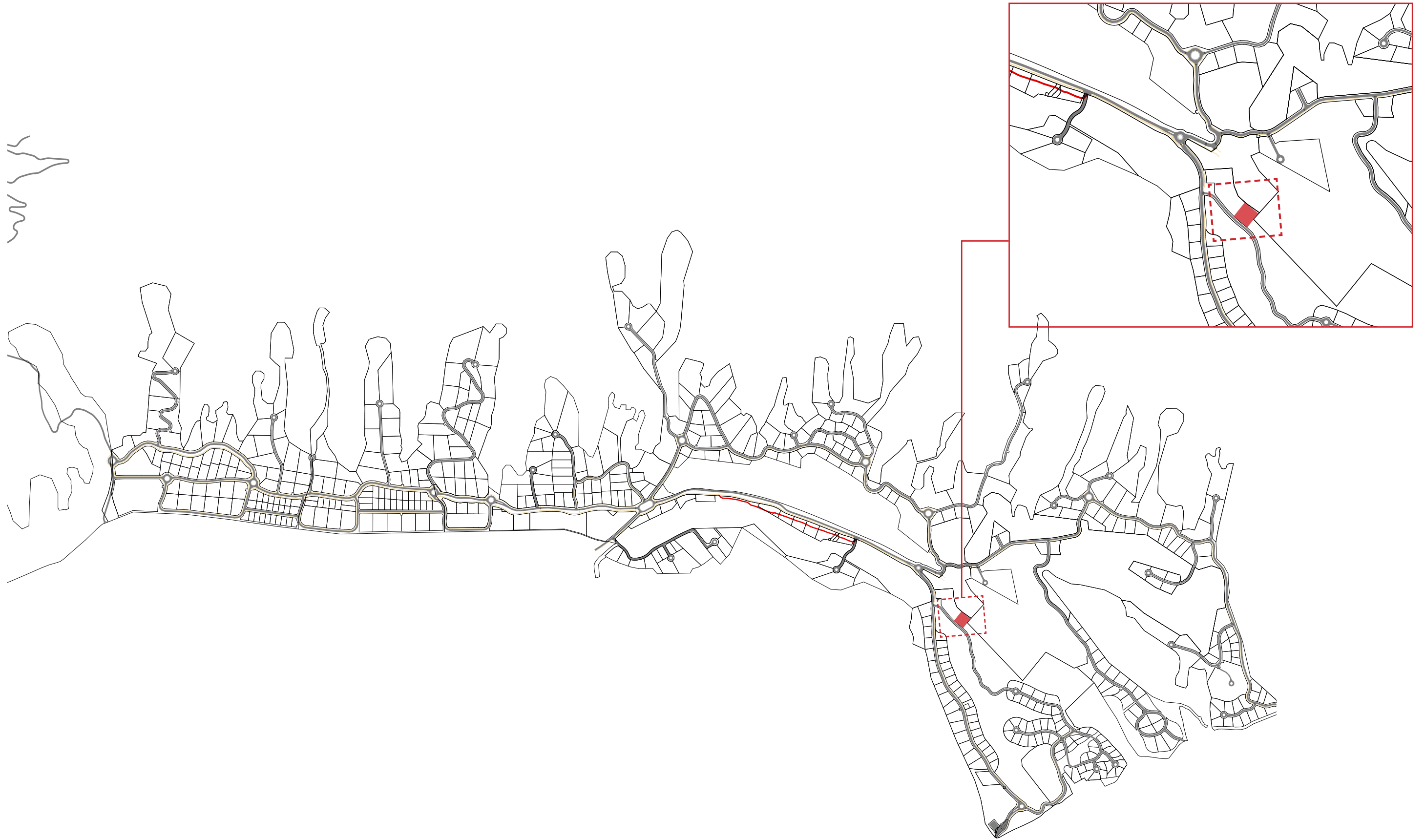


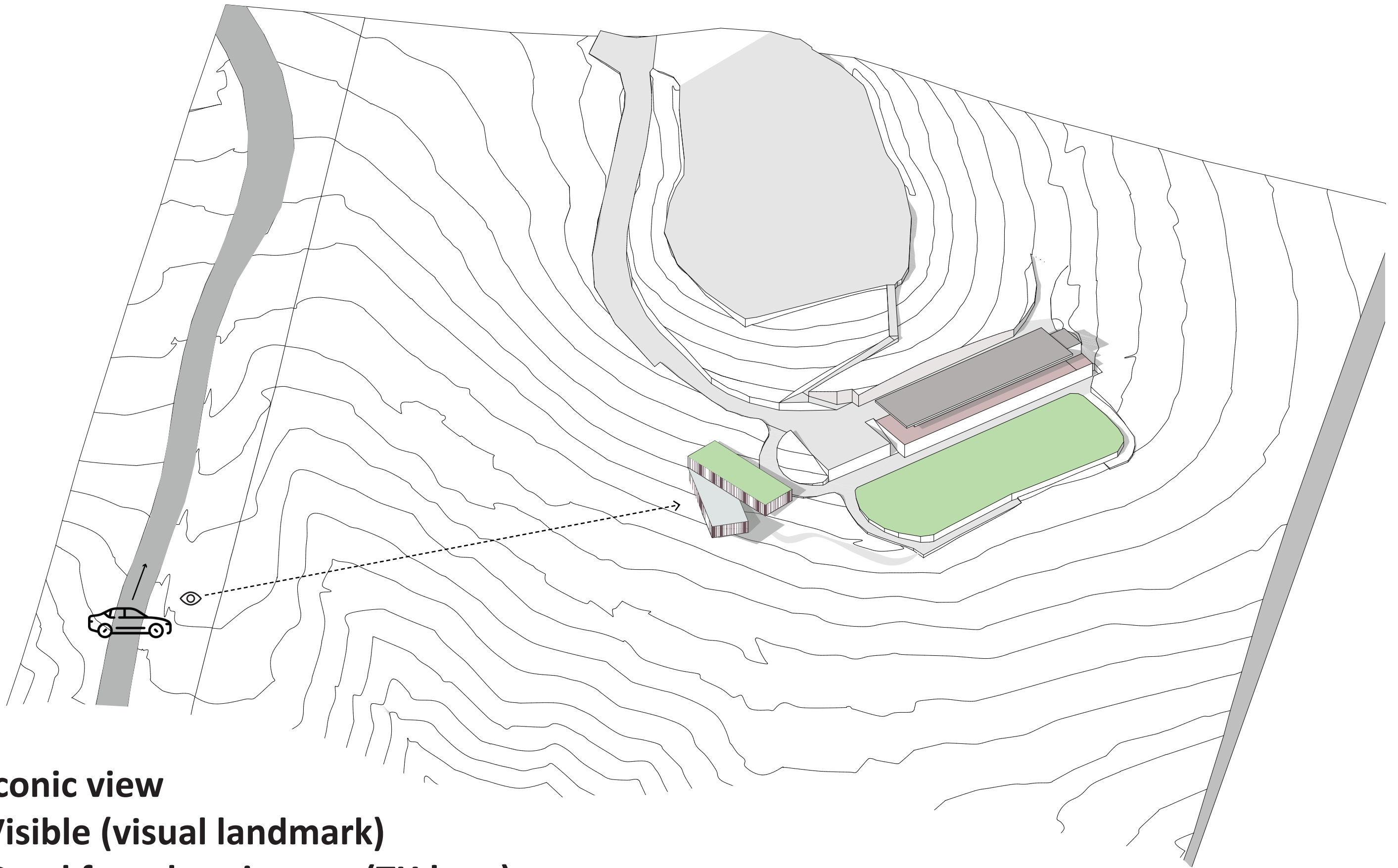
GOLF CLUBHOUSE CONCEPT AND LOCATION



LOCATION

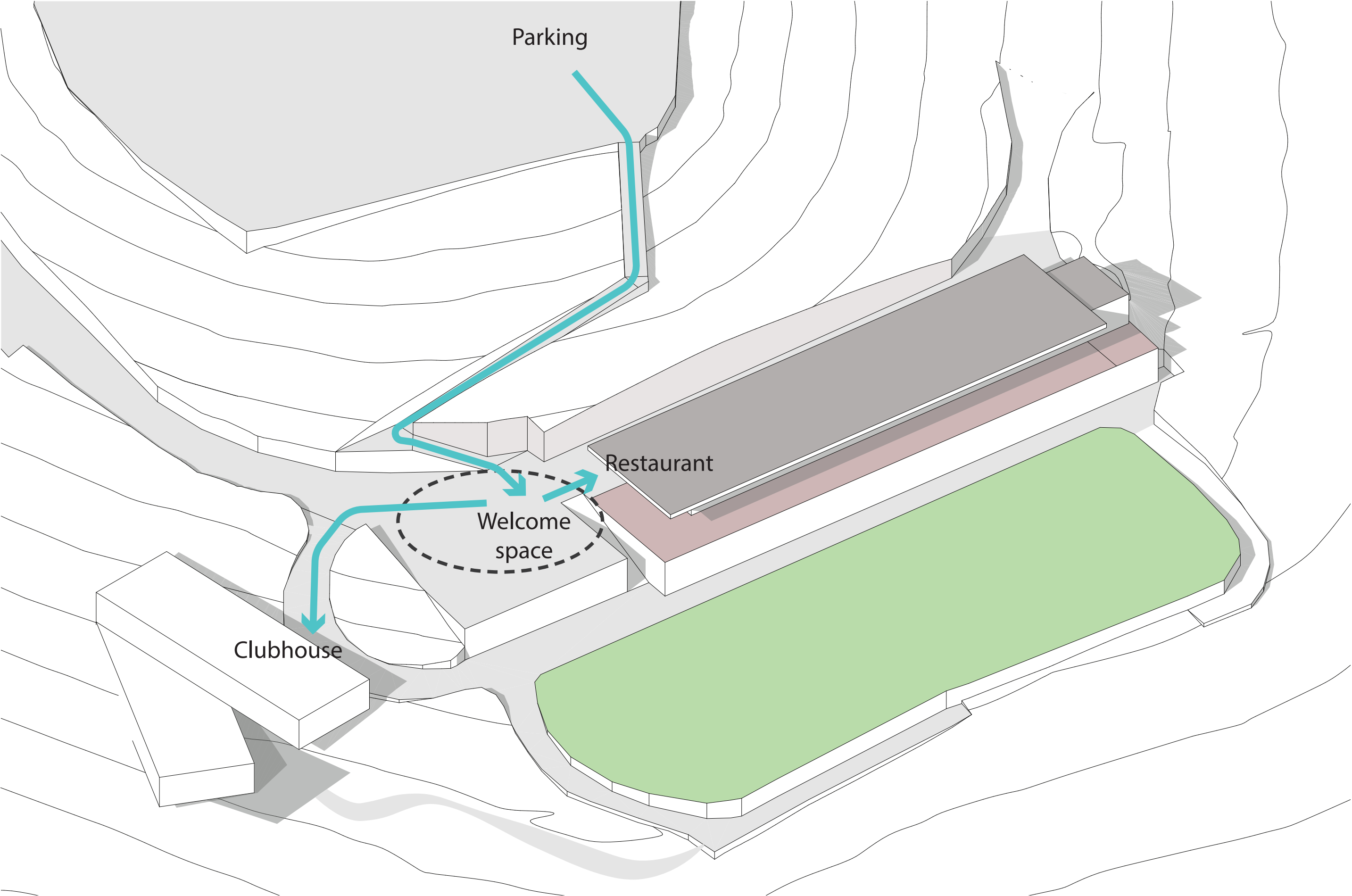


FIRST PERCEPTION

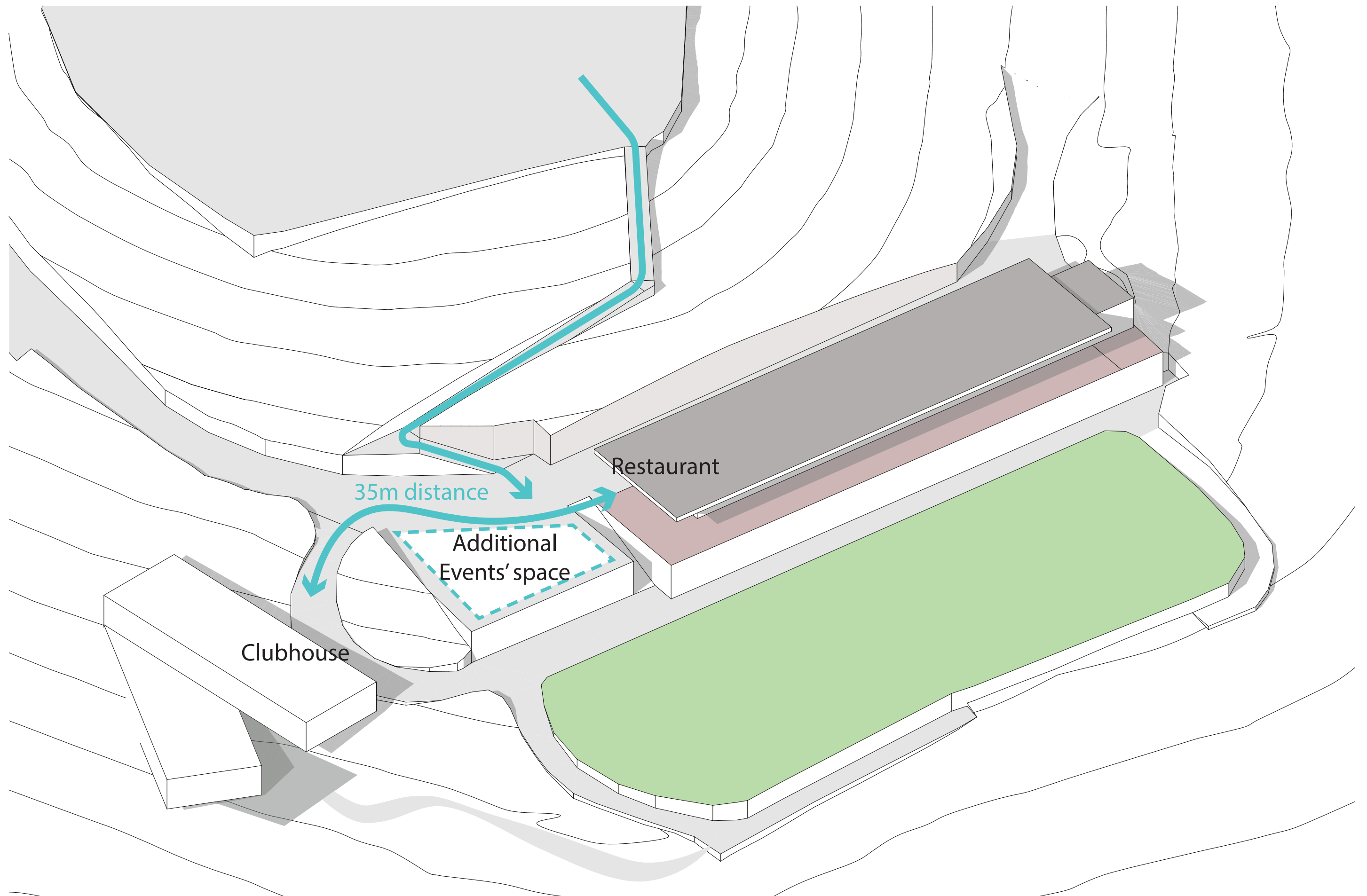


- Iconic view
- Visible (visual landmark)
- Good for advertisement (TH logo)

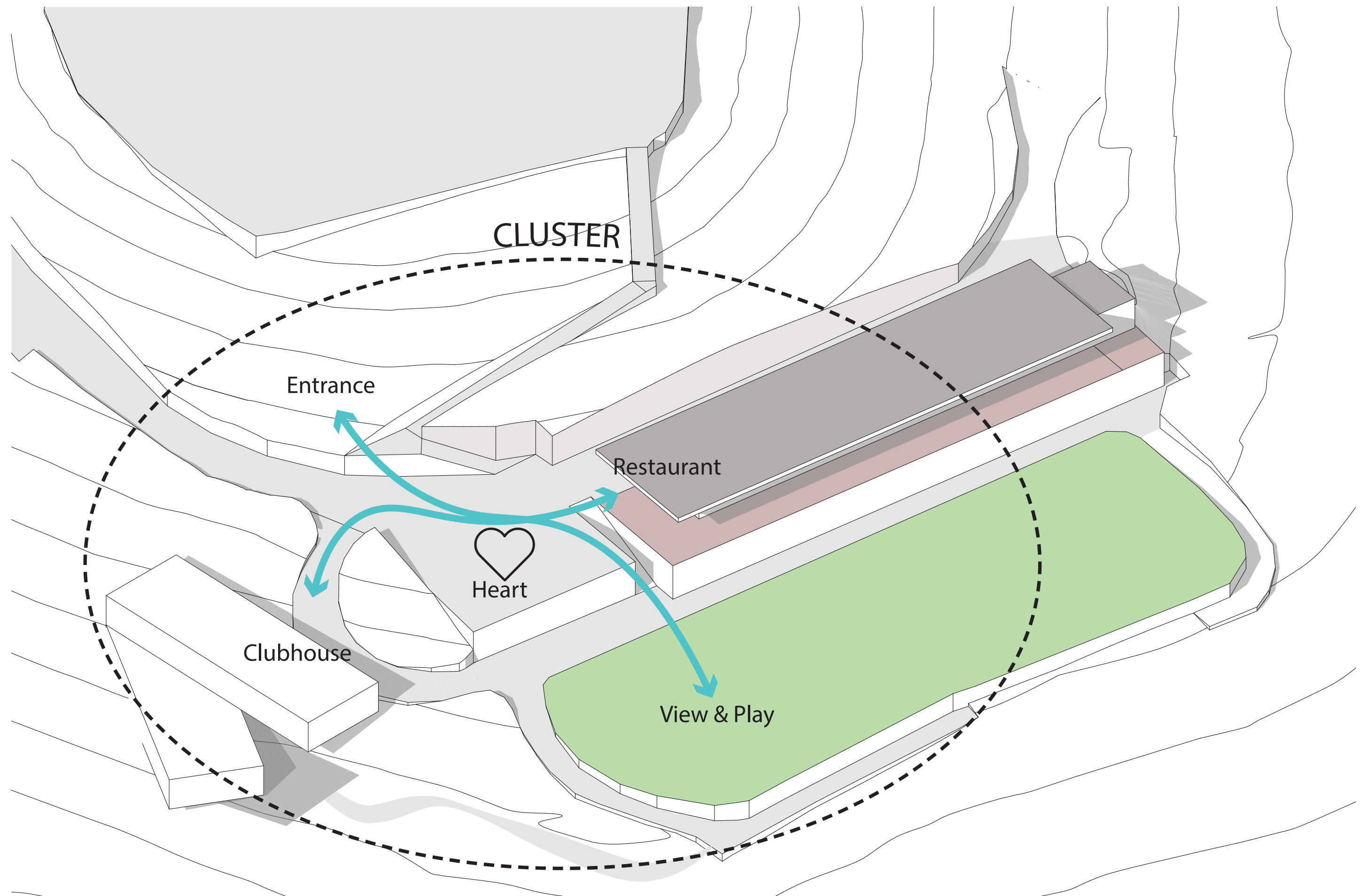
CIRCULATION



EVENTS' SPACE



CLUSTER DEVELOPMENT



CLUBHOUSE BUILDING REQUIREMENTS

0 Level:

Total Building area 185 sqm

Golf shop- 50 sqm

Storage- 38 sqm

Toilets- 7 sqm

Multifunctional space- 60 sqm

Office space- 30 sqm

-1 Level:

Total Building area: 194 sqm, Buggy parking: 130 sqm

Service room- 9 sqm

Cleaning room- 8 sqm

Staff rest/dining area- 20 sqm

Staff locker room Golf&Rest- 20 sqm

Restaurant storage room- 10 sqm

Inventory rooms- 10 sqm

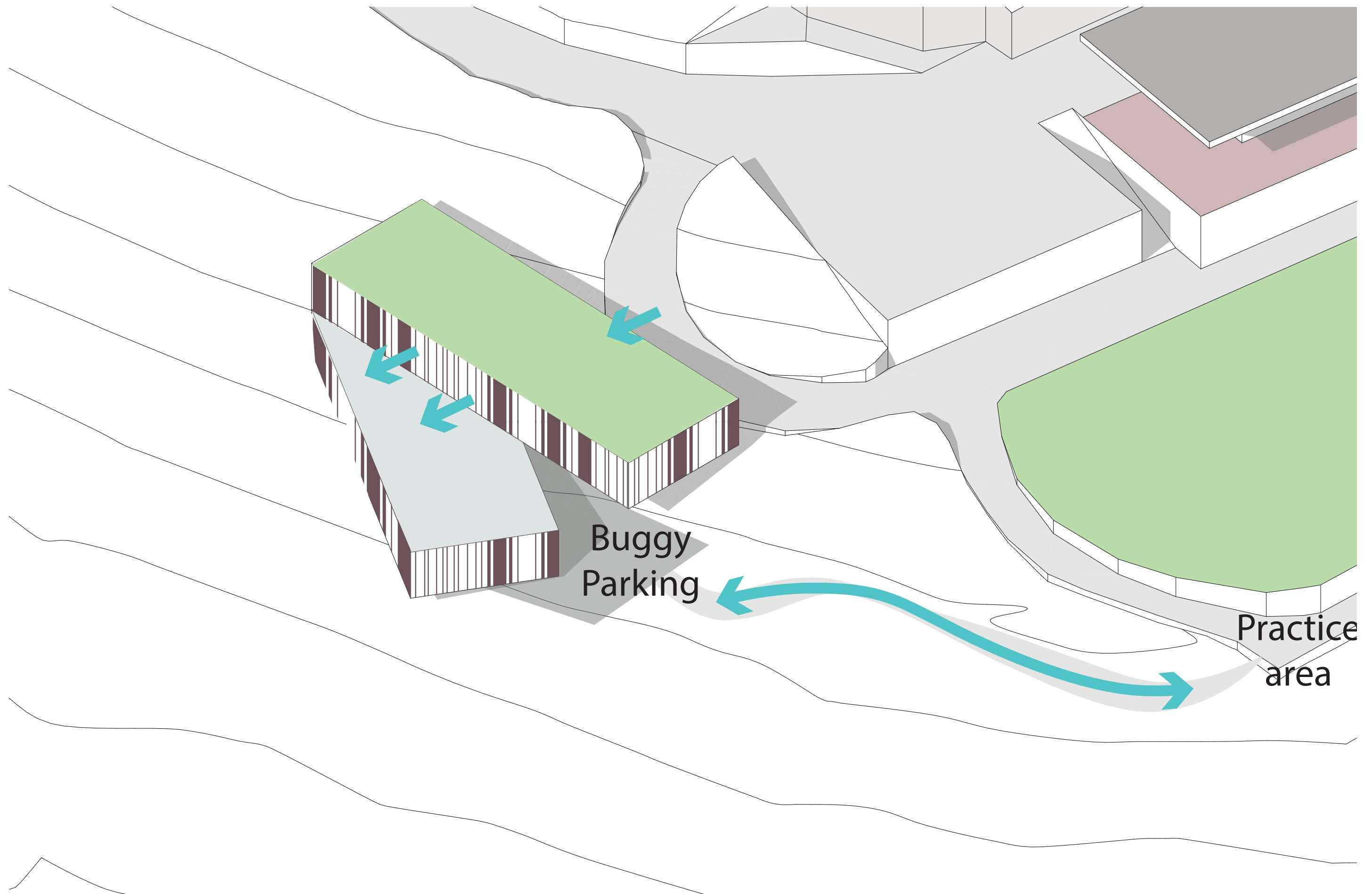
partly open space (roofed)- 130 sqm

Men's locker room- 74 sqm

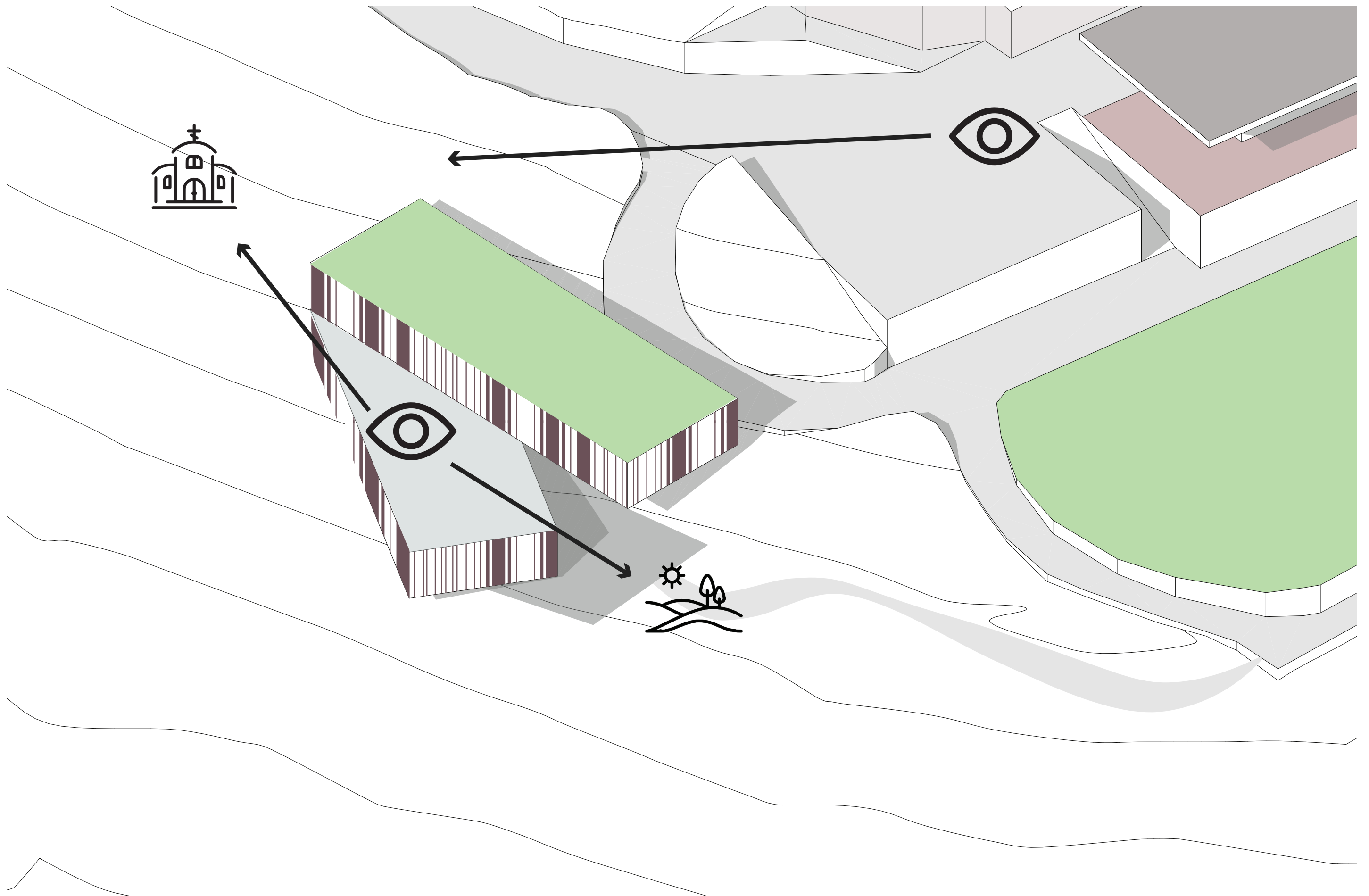
Women's locker room- 29 sqm

Sauna- 14 sqm

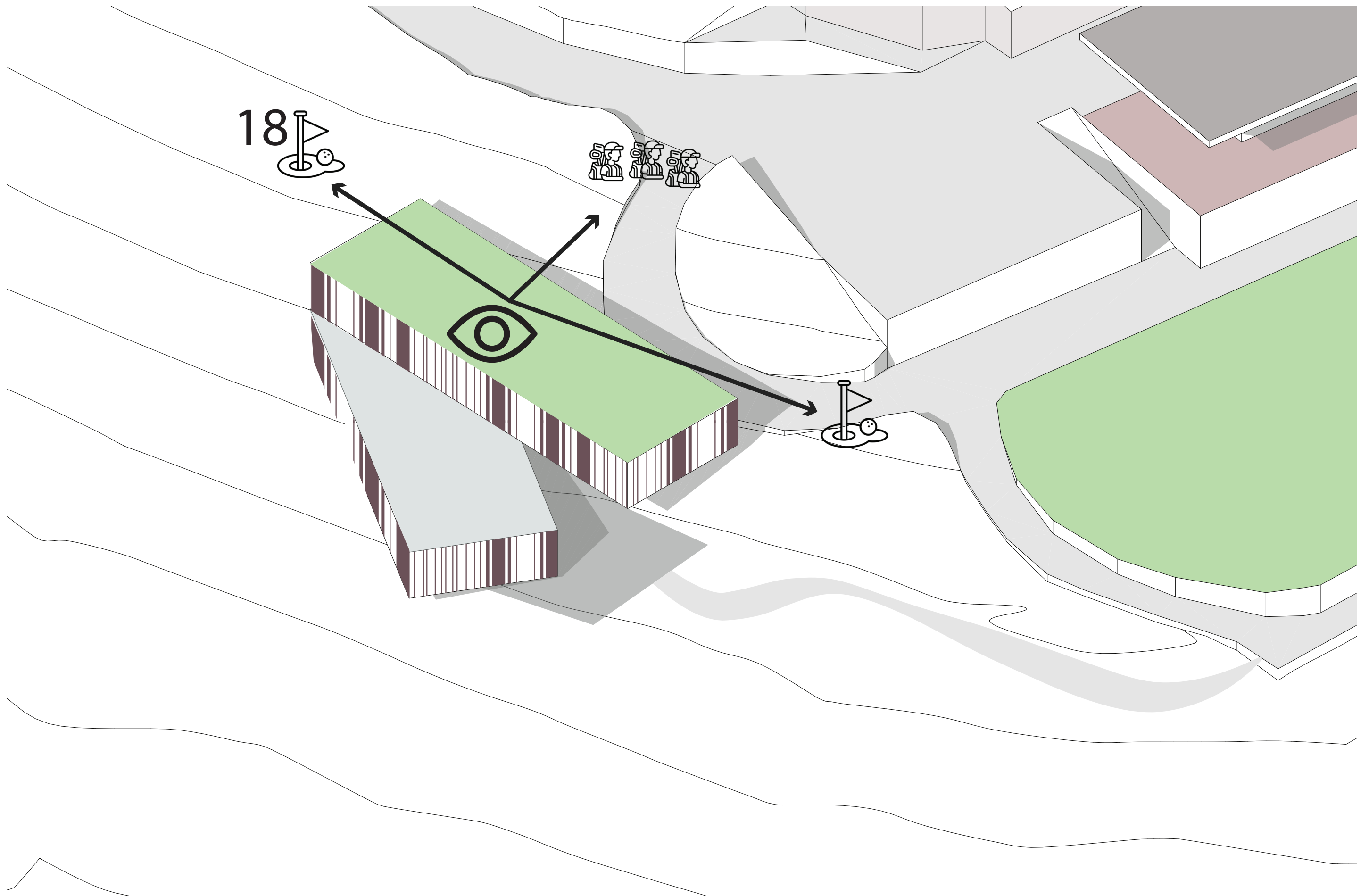
CLUBHOUSE BUILDING ARRANGEMENT



VIEWS FOR VISITORS

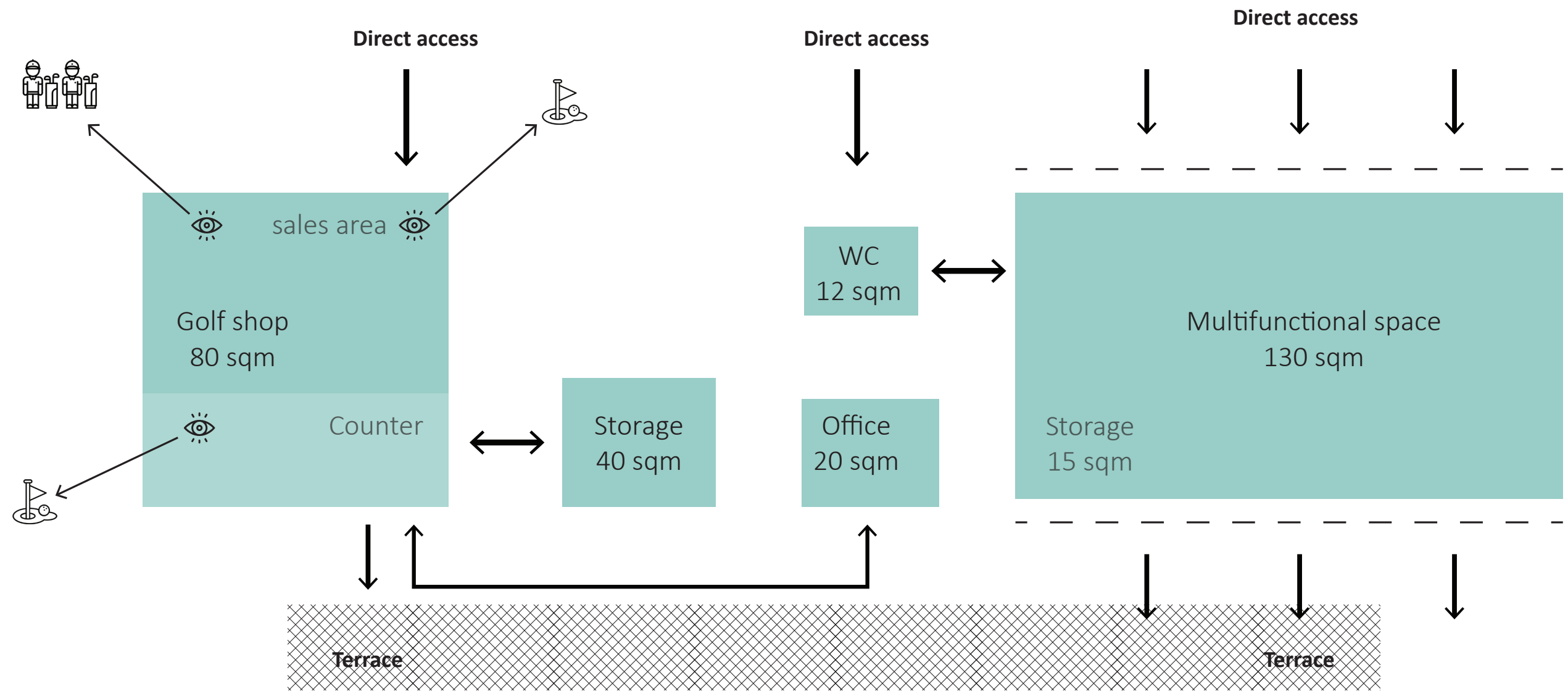


VIEWS FOR STAFF



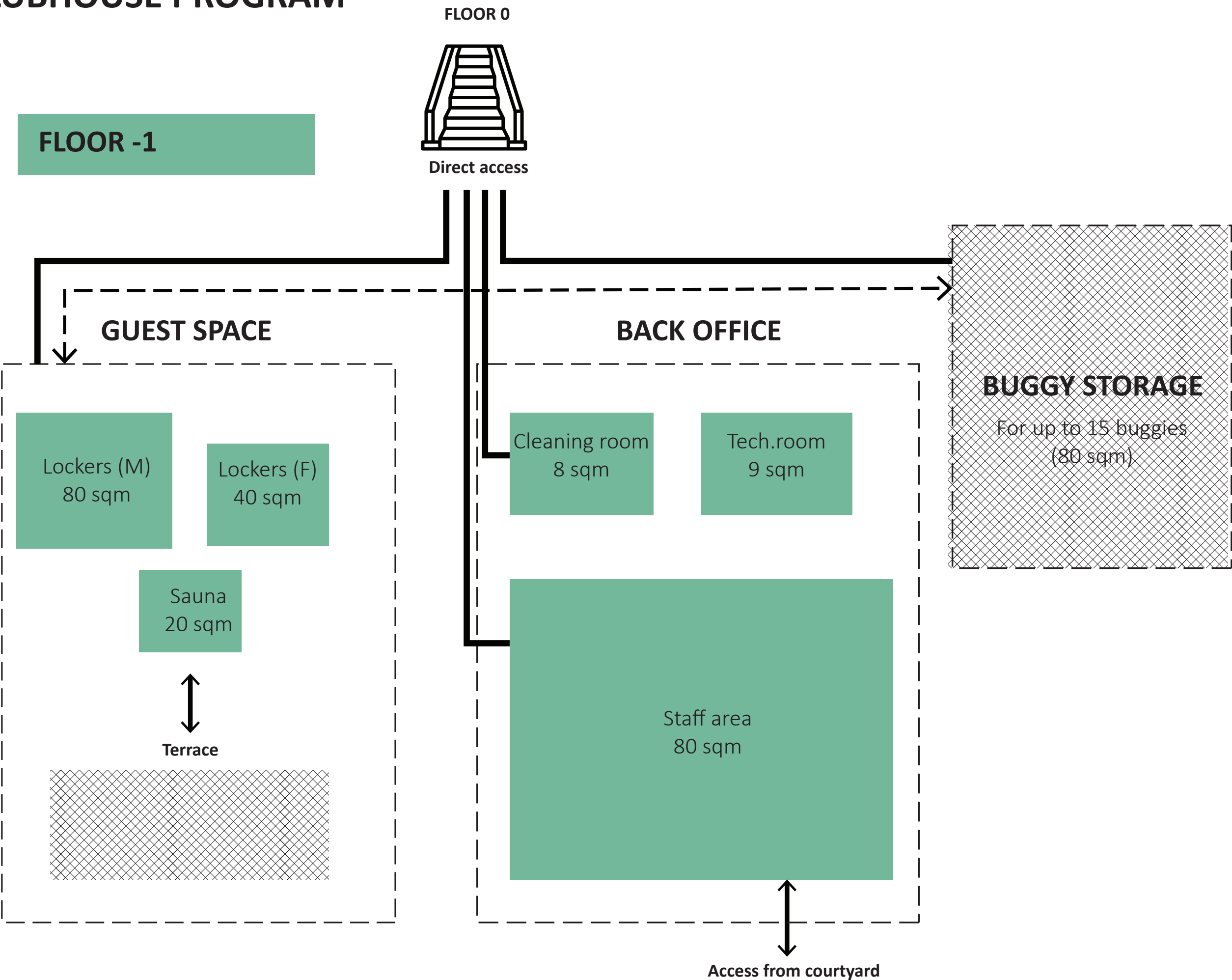
GOLF CLUBHOUSE PROGRAM

FLOOR 0

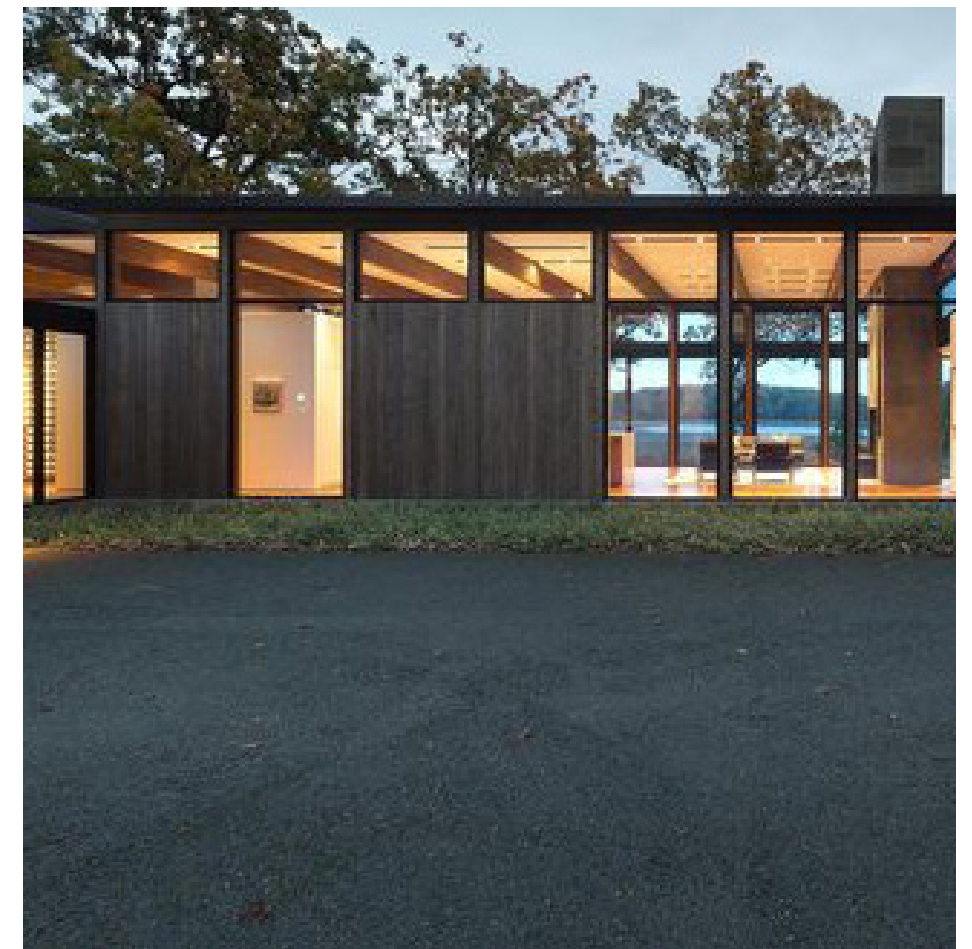




GOLF CLUBHOUSE PROGRAM



REFERENCE MOOD BOARD



DESIGN GUIDELINES

The architectural style of the building should be coordinated with the overall architectural design guidelines of the complex:

- The lines of the Buildings from all perspectives shall be straight and right-angled.
- Crow steps, towers, etc. are not allowed.
- Flat roofs and/or mono-pitched roofs are preferred.
- For the finishing of the exterior walls plaster, bricks, stone or wood shall be used.
- At least 70% of the Building shall be finished using one material.
- Up to 30% of the exterior wall (excluding glazed openings) can be finished with some other material.
- It is not allowed to use round logs, fieldstones, or plastic for exterior finishing.
- It is not allowed to use plywood (except in shades of white) as the main material of exterior finishing.
- The roofing material shall be in one color, preferably roll covering or smooth rolled metal (color: dark grey).
- Bright colors, painted or spatial decorative elements are not allowed in exterior finishing.
- Tones of window finishing have to be dark grey. Round shape windows are not allowed.
- The material of the windows shall be fully metal.