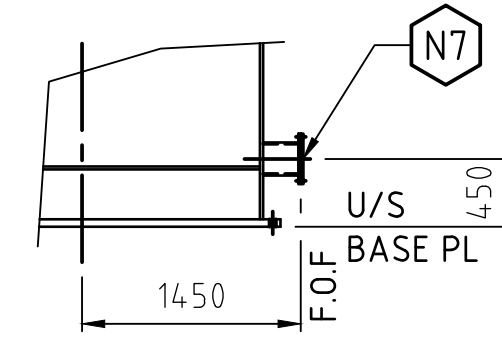
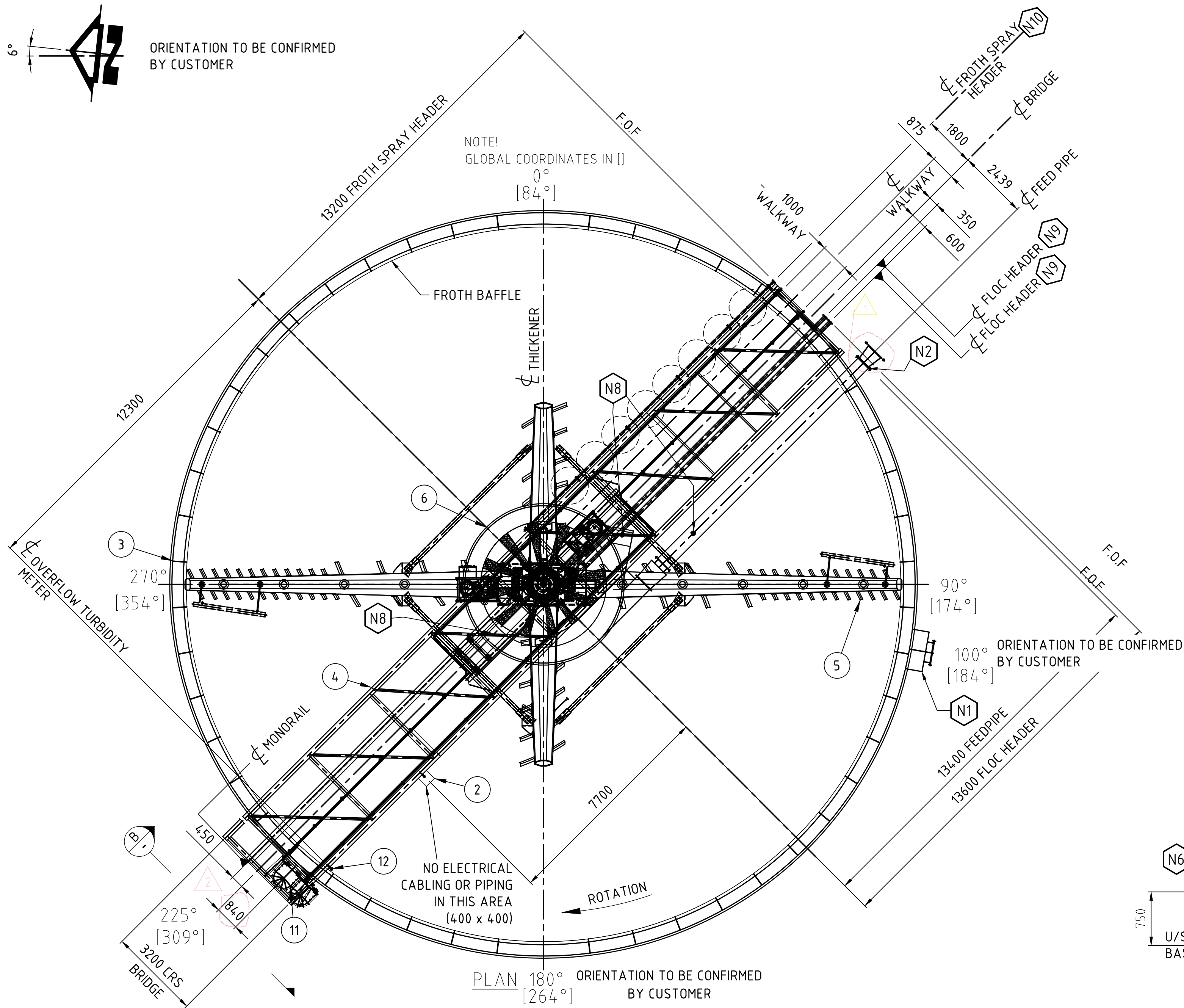
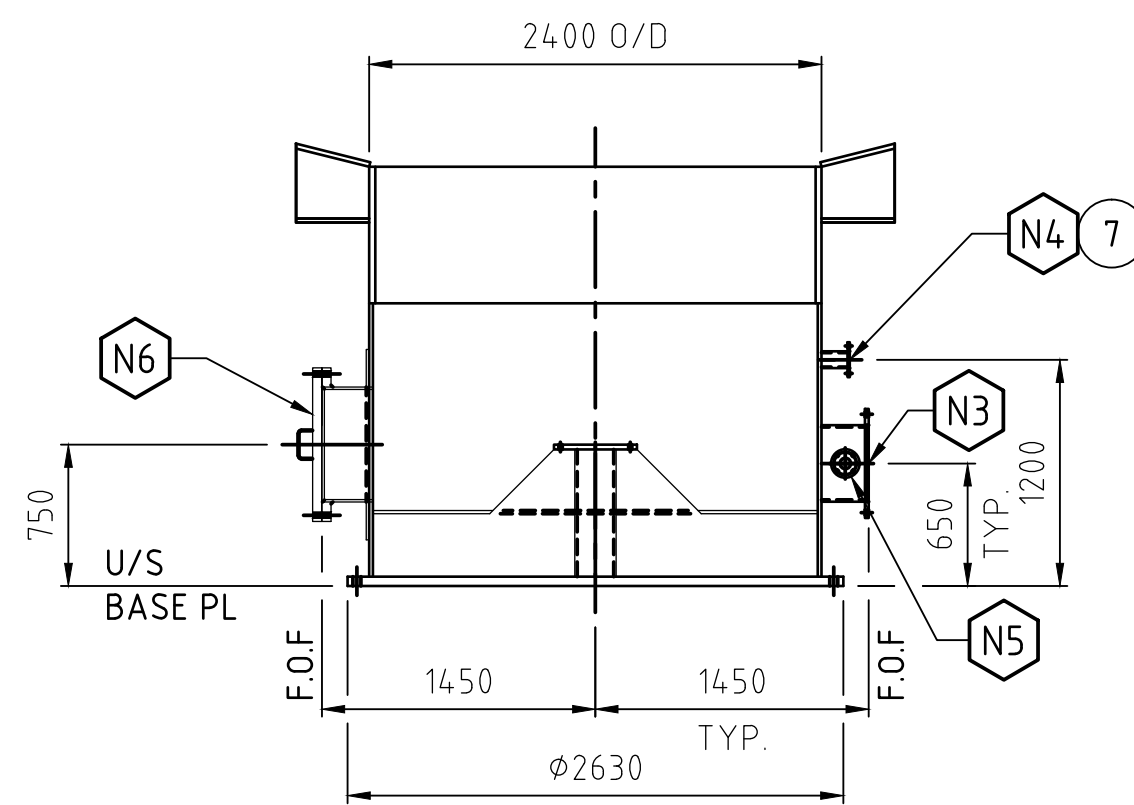


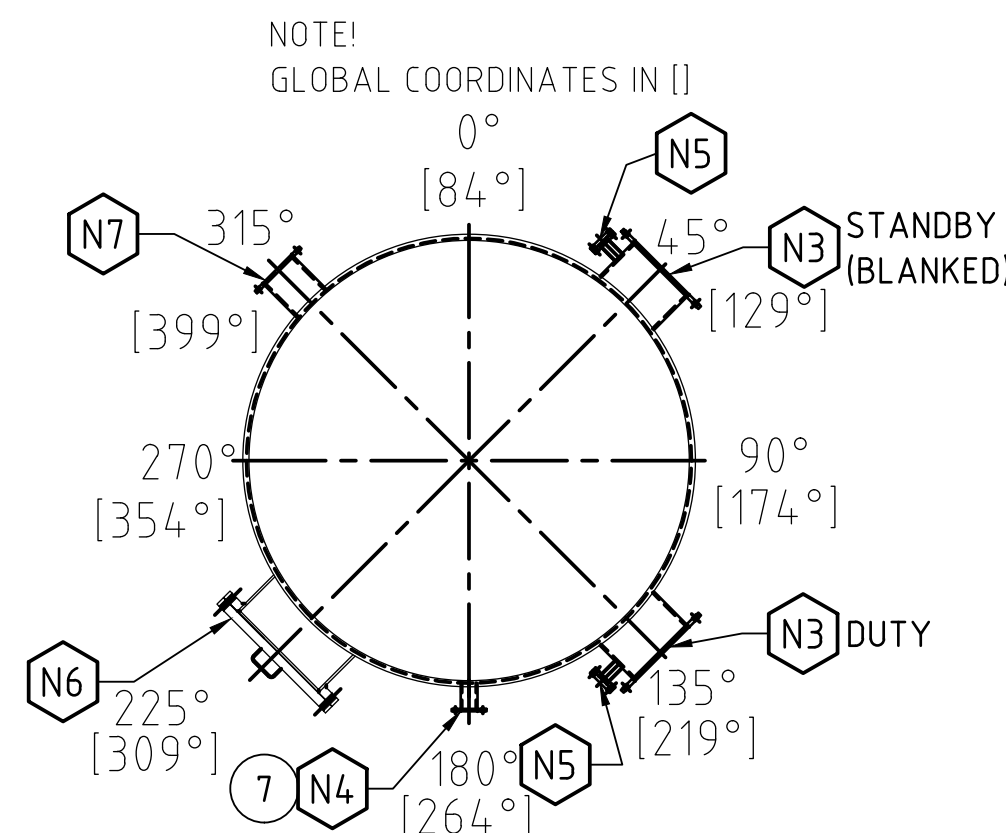
ORIENTATION TO BE CONFIRMED
BY CUSTOMER



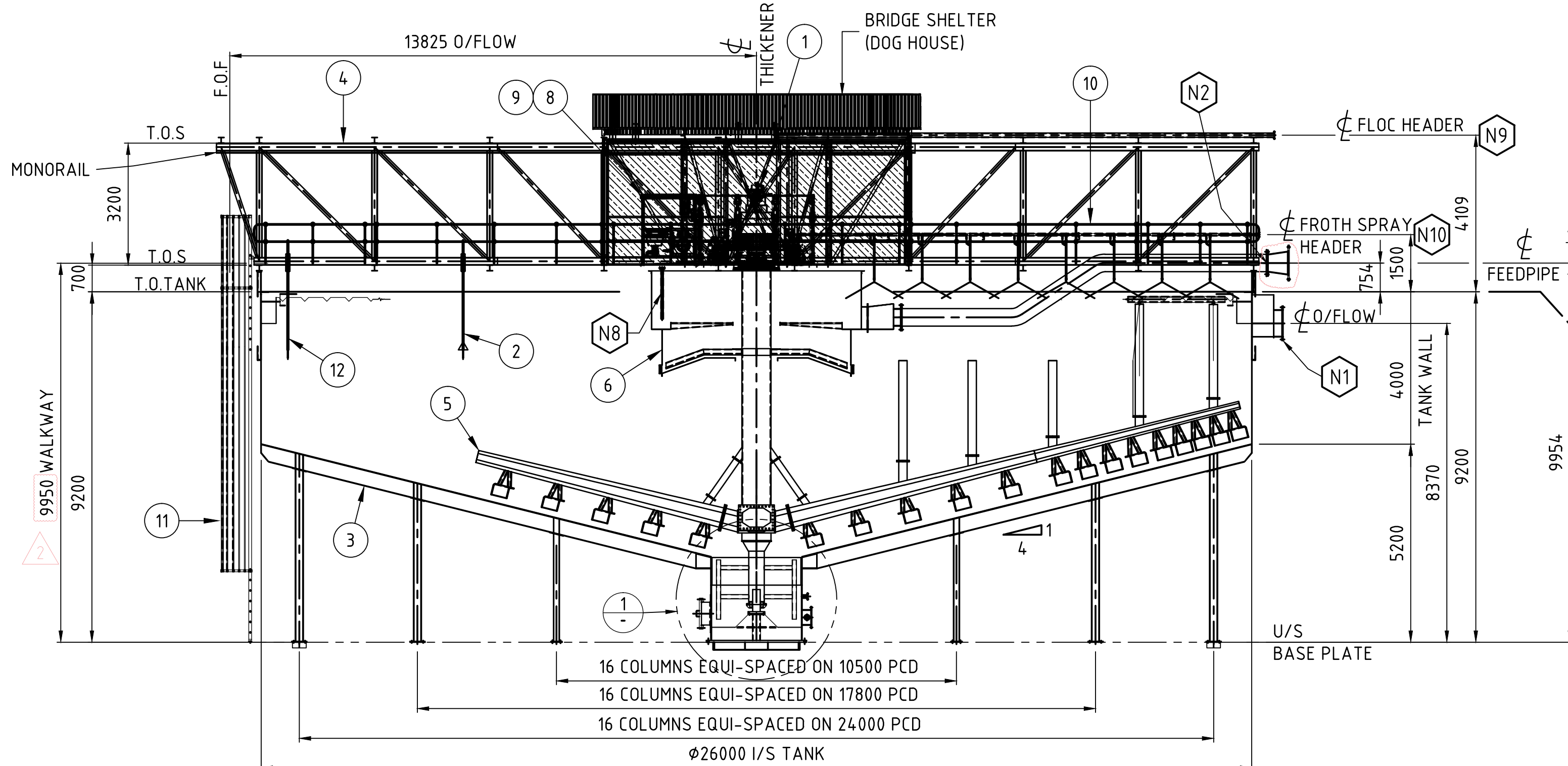
DRAIN NOZZLE DETAILS
ORIENTATION TO BE CONFIRMED BY CUSTOMER
SCALE 1:50



DETAIL 1
SCALE 1:40



UNDERFLOW BOOT NOZZLES
ORIENTATION TO BE CONFIRMED BY CUSTOMER
SCALE 1:40

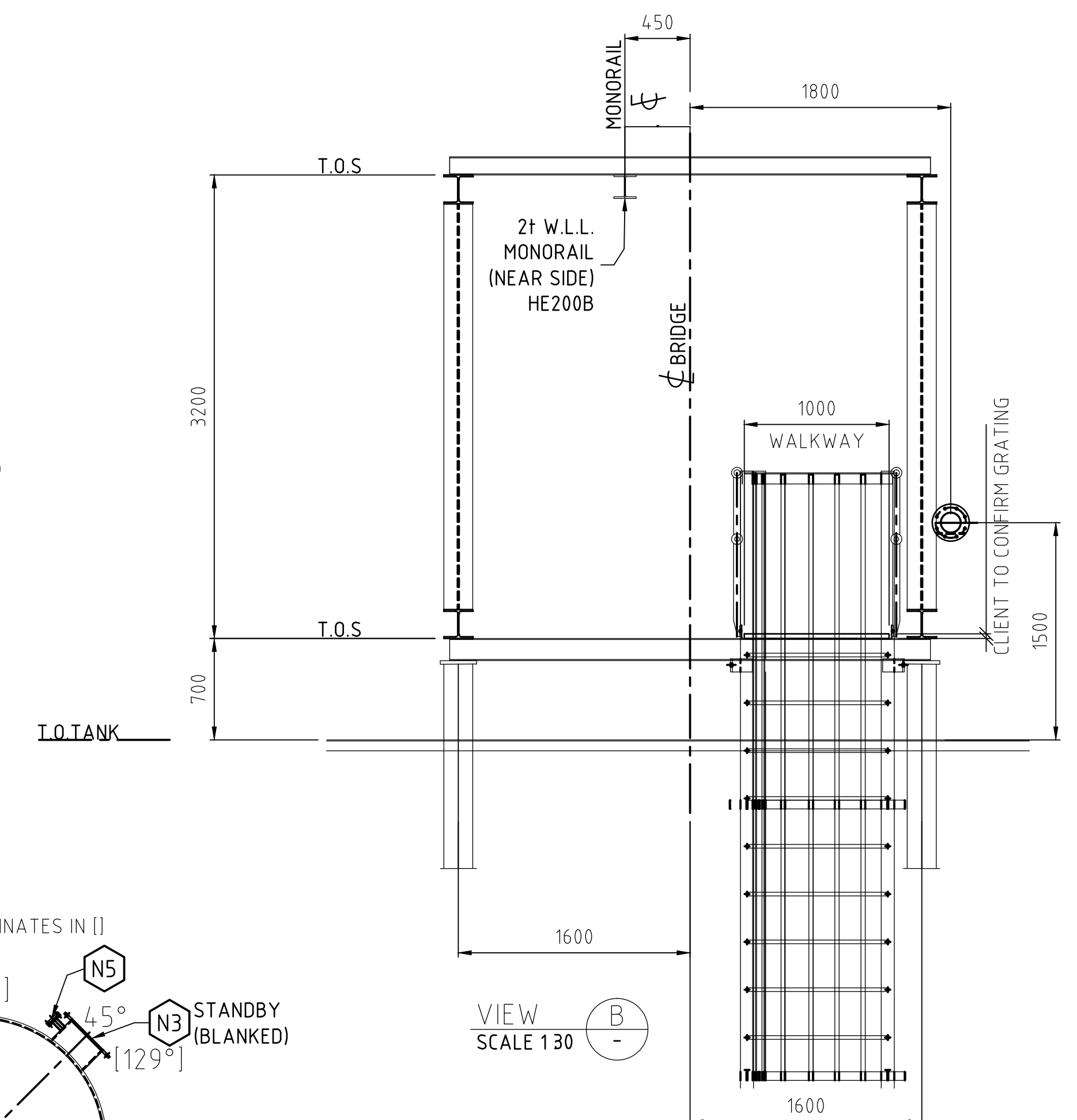



SECTIONAL ELEVATION (REFER TO PLAN FOR CORRECT ORIENTATION)

ITEM	DESCRIPTION	SIZE	QTY	CONNECTION TYPE
N10	FROTH SPRAY HEADER	DN50	1	EN 1092-1 PN10
N9	FLOC HEADER	DN100	2	EN 1092-1 PN10
N8	FLOC DOSING PIPE	DN50	3	EN 1092-1 PN10
N7	DRAIN (BLANKED)	DN200	1	EN 1092-1 PN10
N6	MANHOLE	DN600	1	EN 1092-1 PN10
N5	FLUSH (BLANKED)	DN50	2	EN 1092-1 PN10
N4	BED MASS	DN80	1	EN 1092-1 PN10
N3	UNDERFLOW (1 DUTY / 1 STANDBY)	DN400	2	EN 1092-1 PN10
N2	FEEDPIPE	DN600	1	EN 1092-1 PN10
N1	OVERFLOW	DN700	1	EN 1092-1 PN10

NOZZLE LIST

PART	DESCRIPTION	SUB-DWG. NO. \ MATERIAL	QTY	WEIGHT (KG)	ITEM NO.	REMARKS
12	OVERFLOW TURBIDITY METER	-	1	-	-	-
11	EMERGENCY LADDER	-	1	-	-	-
10	-	-	-	-	-	-
9	POWER PACK - 30 kW	-	1	-	-	-
8	CONTROL PANEL	-	1	-	-	-
7	BED MASS SENSOR	-	1	-	-	-
6	FEED ASSEMBLY c/w FROTH SPRAY SYSTEM	-	1	-	-	-
5	RAKE MECHANISM ASSEMBLY c/w FROTH BOOM & ROTATING PICKETS	-	1	-	-	-
4	BRIDGE ASSEMBLY c/w TWIN MONORAIL	-	1	-	-	-
3	TANK & SUPPORT STRUCTURE c/w FROTH Baffle	-	1	-	-	-
2	BED LEVEL SENSOR	-	1	-	-	-
1	GIGA DRIVE ASSEMBLY - (300 LIFT - REGGIANA RR55000 L5 FS SAI SERIES)	-	1	-	-	-



0	juksik	28.07.2021	swadev2	28.07.2021	juksik	28.07.2021	ISSUED FOR PROPOSAL		
1	henkal	19.08.2021	pasraj	19.08.2021	juksik	19.08.2021	ADDED ADAPTER CONE FOR INLET, POWER INPUT		
2	juksik	18.01.2022	nikbra	18.01.2022	juksik	18.01.2022	WALKWAY HEIGHT AND LADDER UPDATED		
REV.	NAME	DATE	NAME	DATE	NAME	DATE	REVISION TEXT		
PREPARED		CHECKED		APPROVED					
STATUS						UNITS mm	SCALE 1 : 100	SIZE A1	
CUSTOMER						PROJECT PHASE		SITE NO.	
PROJECT NAME Chemitec RMG Madneuli 2x26m HCT						CUSTOMER DOCUMENT NO.			
REPLACED BY						REPLACES		LANGUAGE	
<h1>Metso:Outotec</h1>						DOCUMENT TITLE			
						GENERAL ARRANGEMENT DRAWING			
						CHEMITEC RMG MADNEULI TAILINGS			
						TAILINGS THICKENER			
						GENERAL ARRANGEMENT			
EQUIPMENT NO.						TTH01-ST02-TH-002 DIA26m HCT- COPPER TAILINGS			
PROJECT ID	PLANT CODE	PLANT UNIT CODE		DOCUMENT TYPE		COUNTING NO.	REVISION	SHEET OF SHEETS	
902745				MTL03			2	1 / 1	
THIS INFORMATION IS CONFIDENTIAL AND PROPRIETARY TO METSO OUTOTEC CORPORATION OR ITS SUBSIDIARIES (METSO OUTOTEC) AND IS PROTECTED BY TRADE SECRET, COPYRIGHT AND/OR OTHER LAWS. IT MAY NOT BE ACCESSED, USED, COPIED OR DISCLOSED WITHOUT THE WRITTEN CONSENT OF METSO OUTOTEC. ALL RIGHTS RESERVED.							DOCUMENT ID OU601723746		

