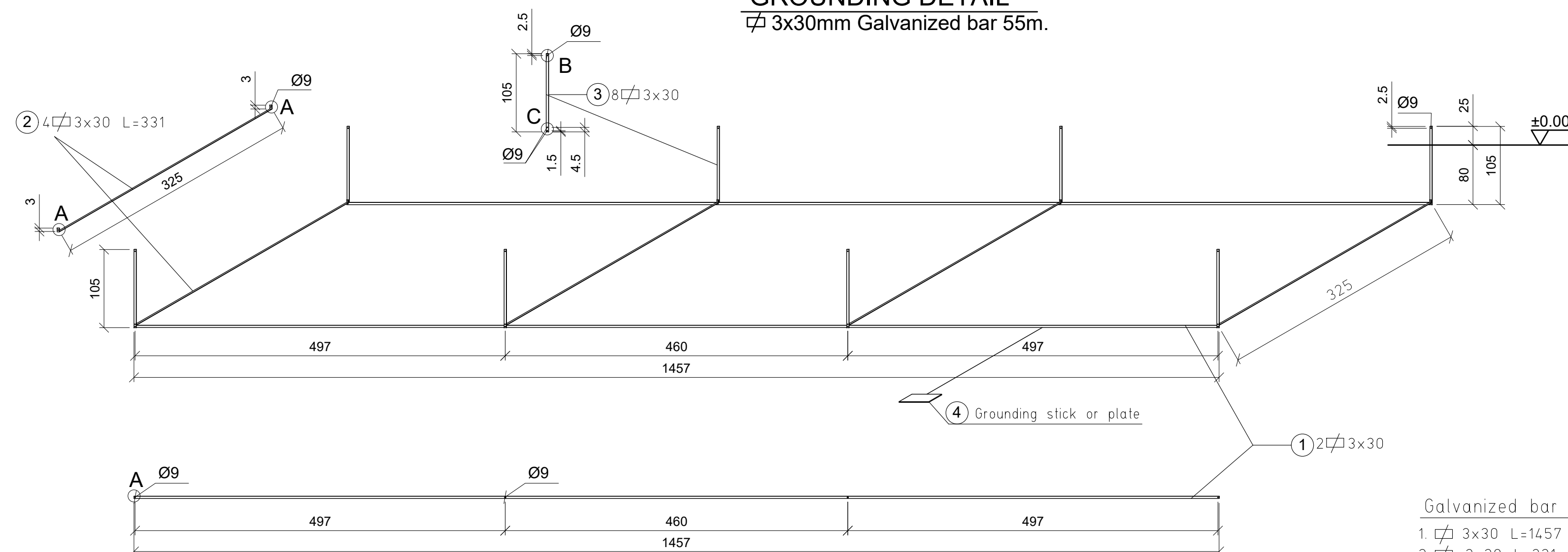
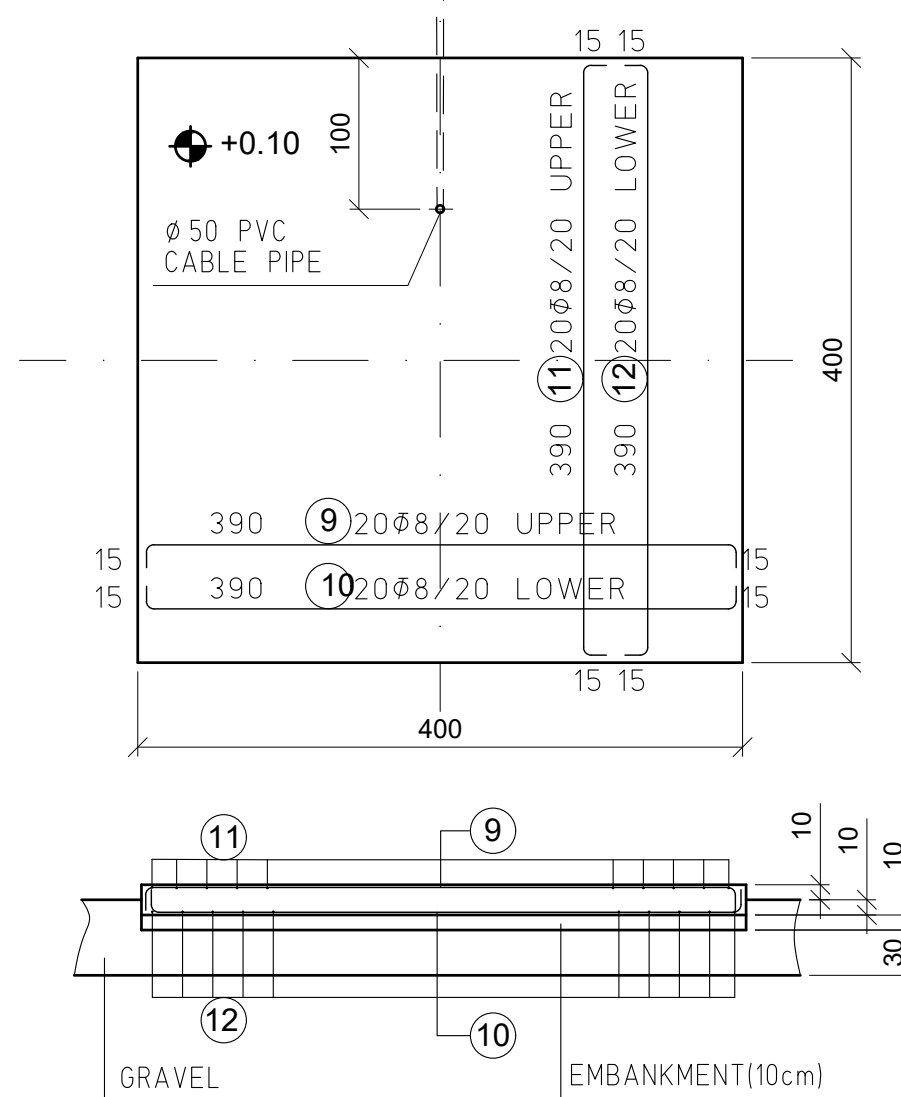



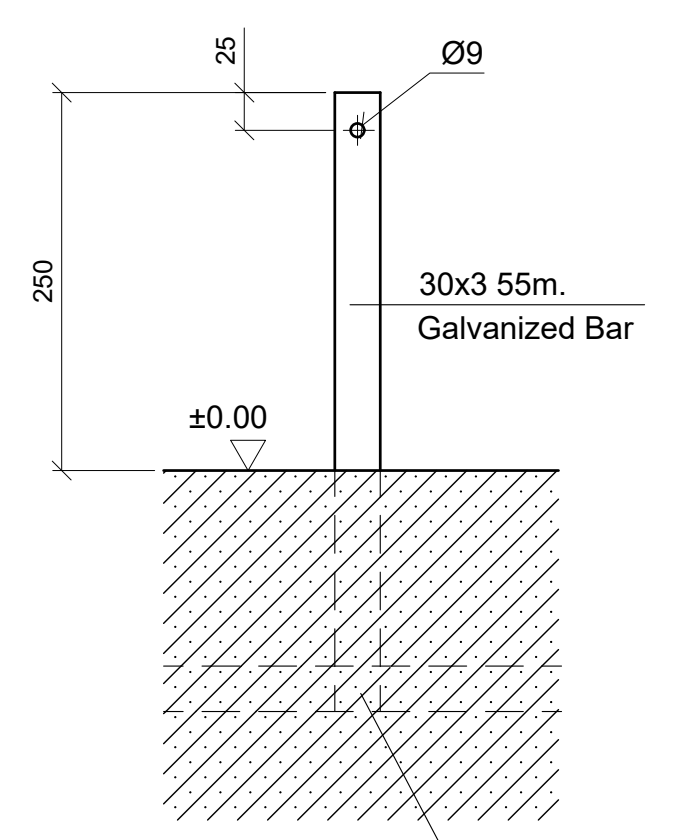
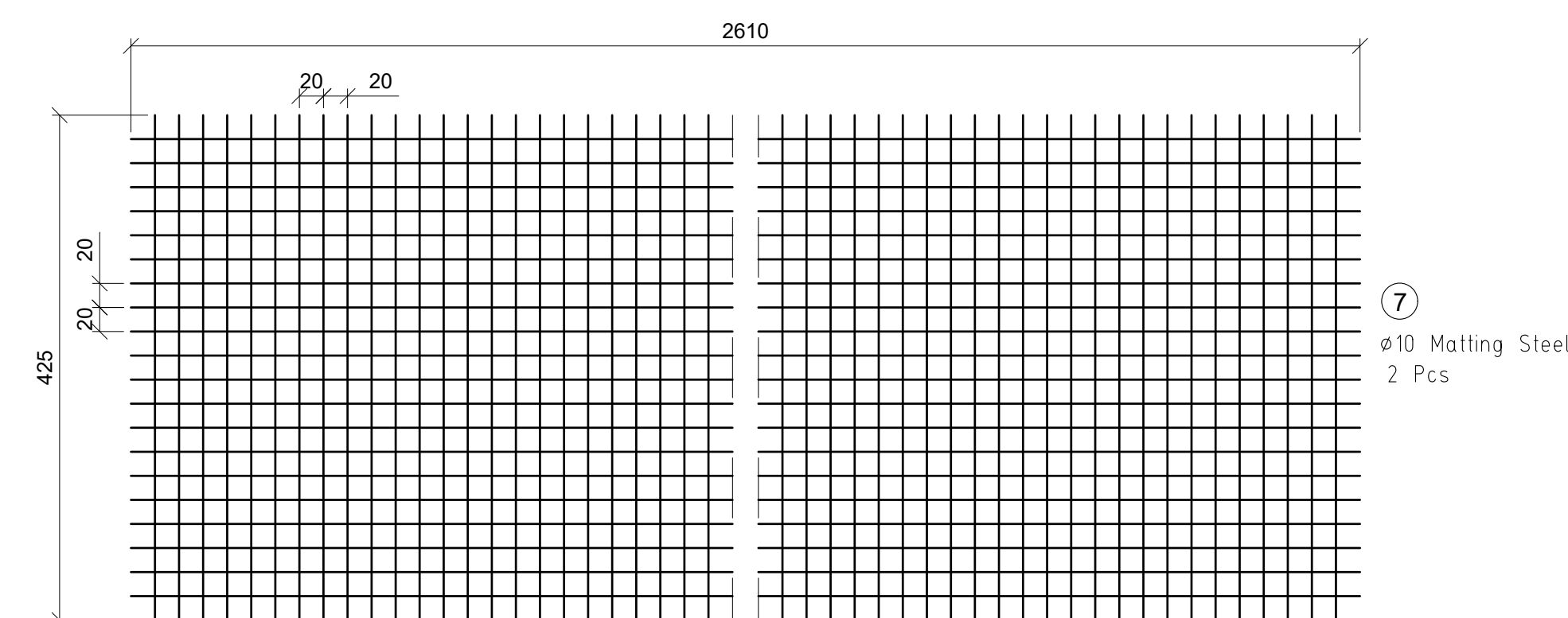
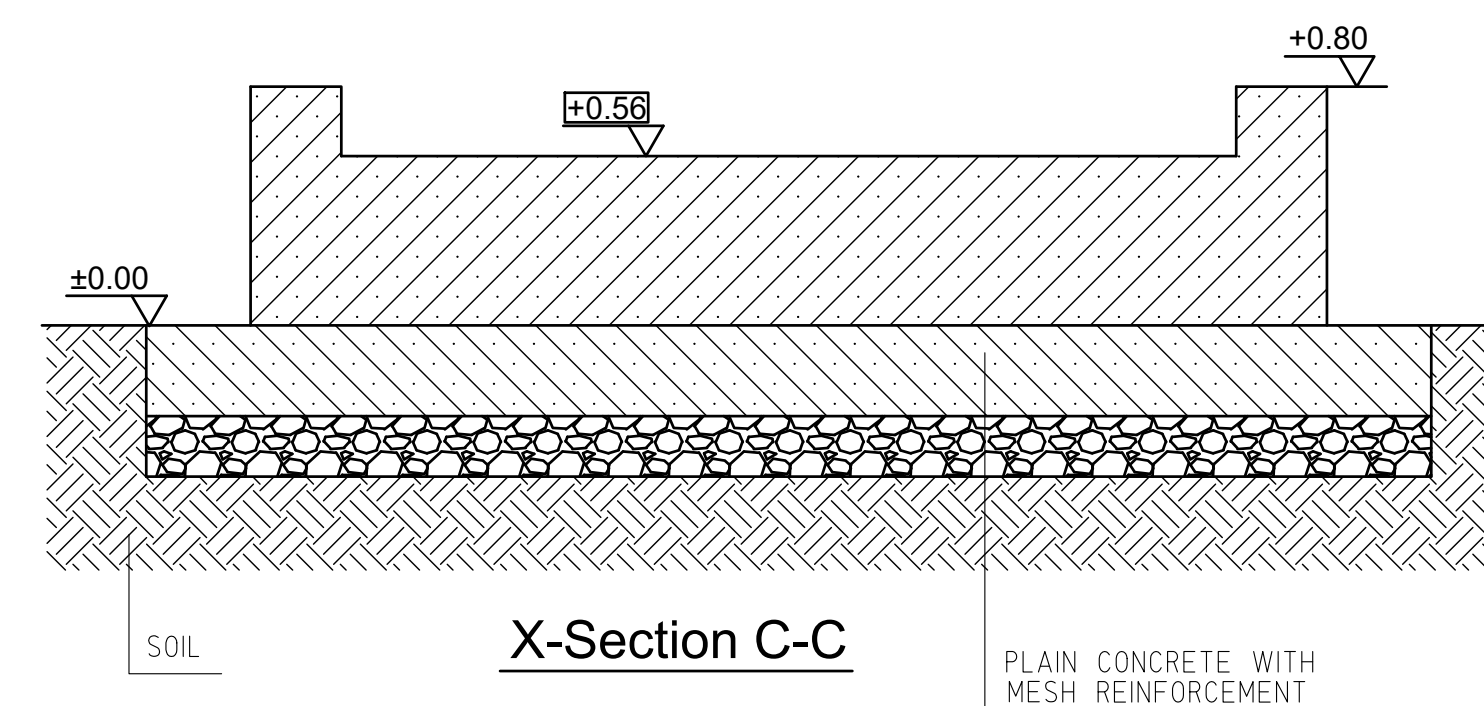
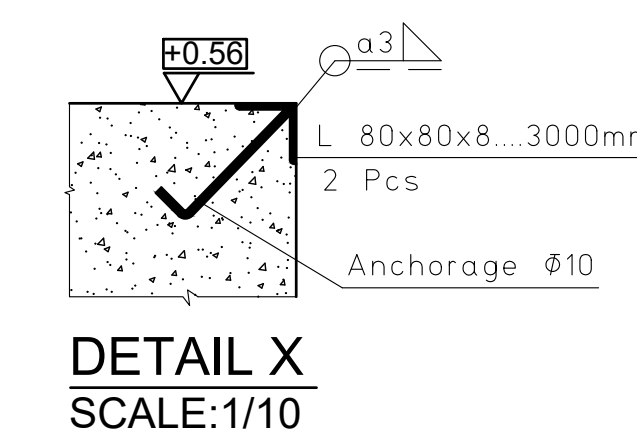
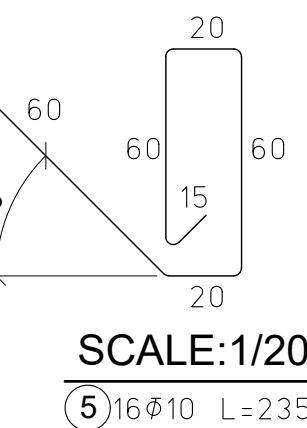
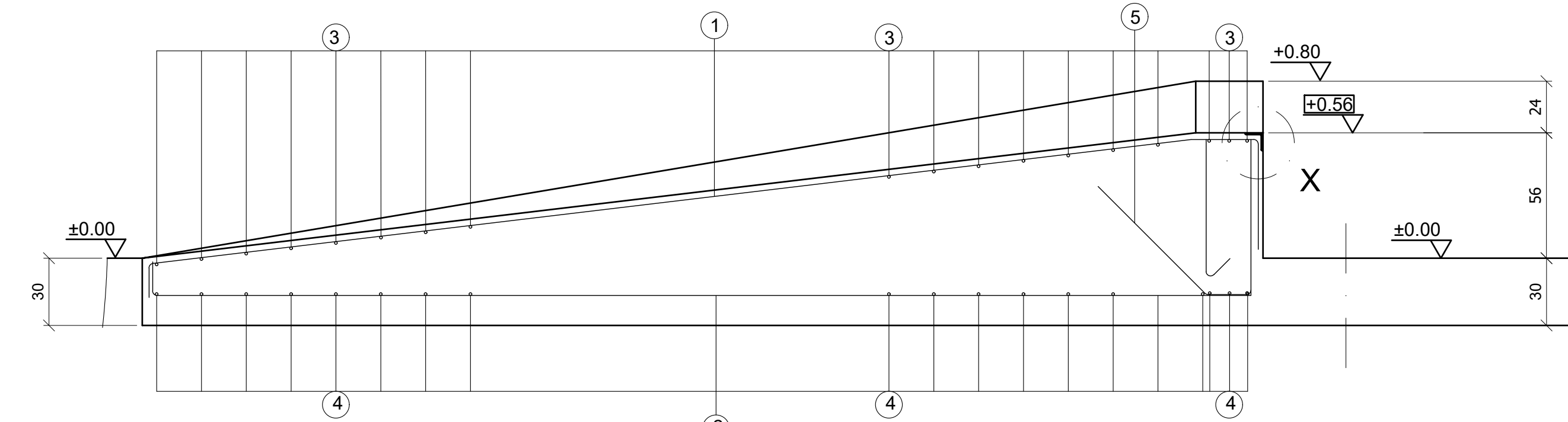
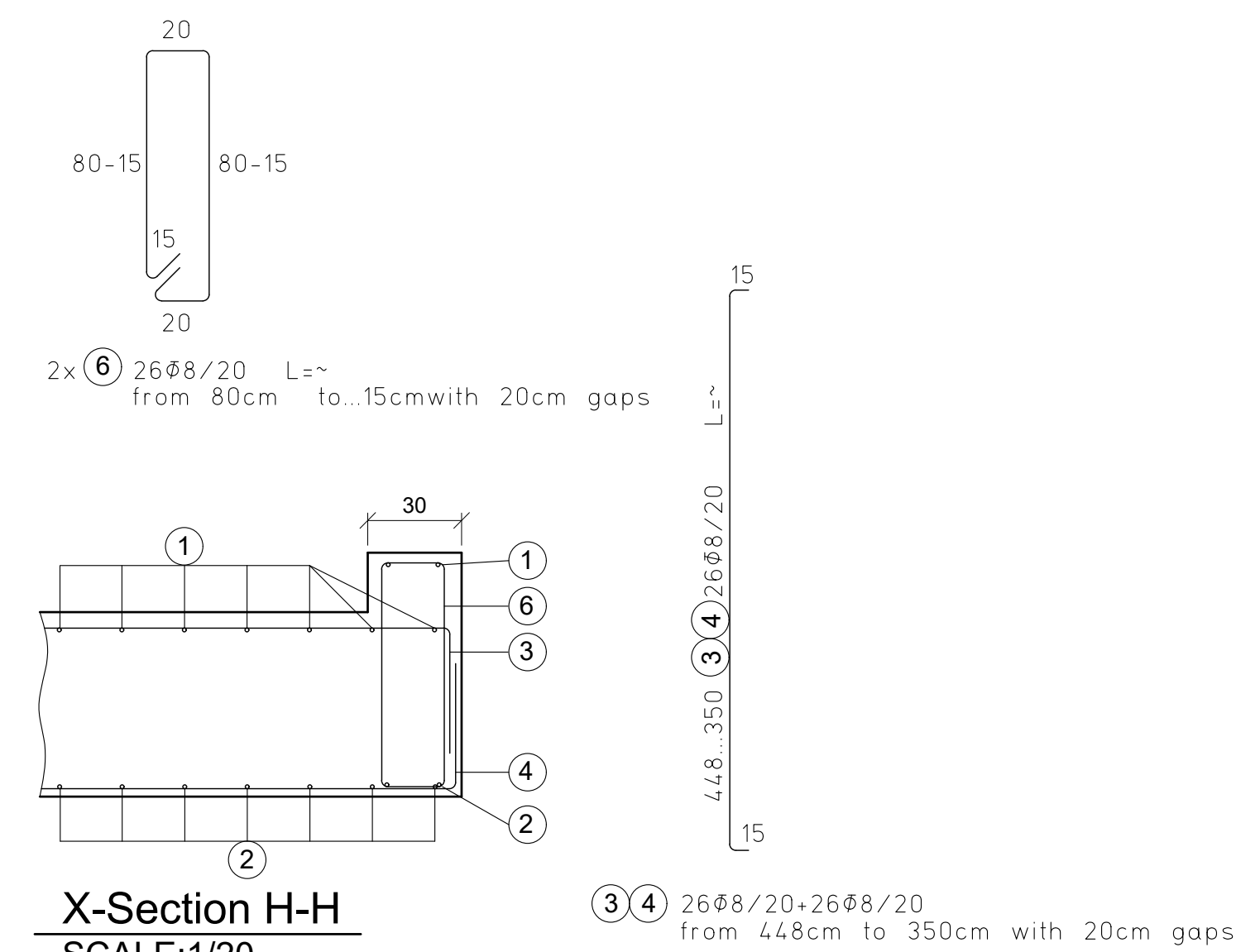
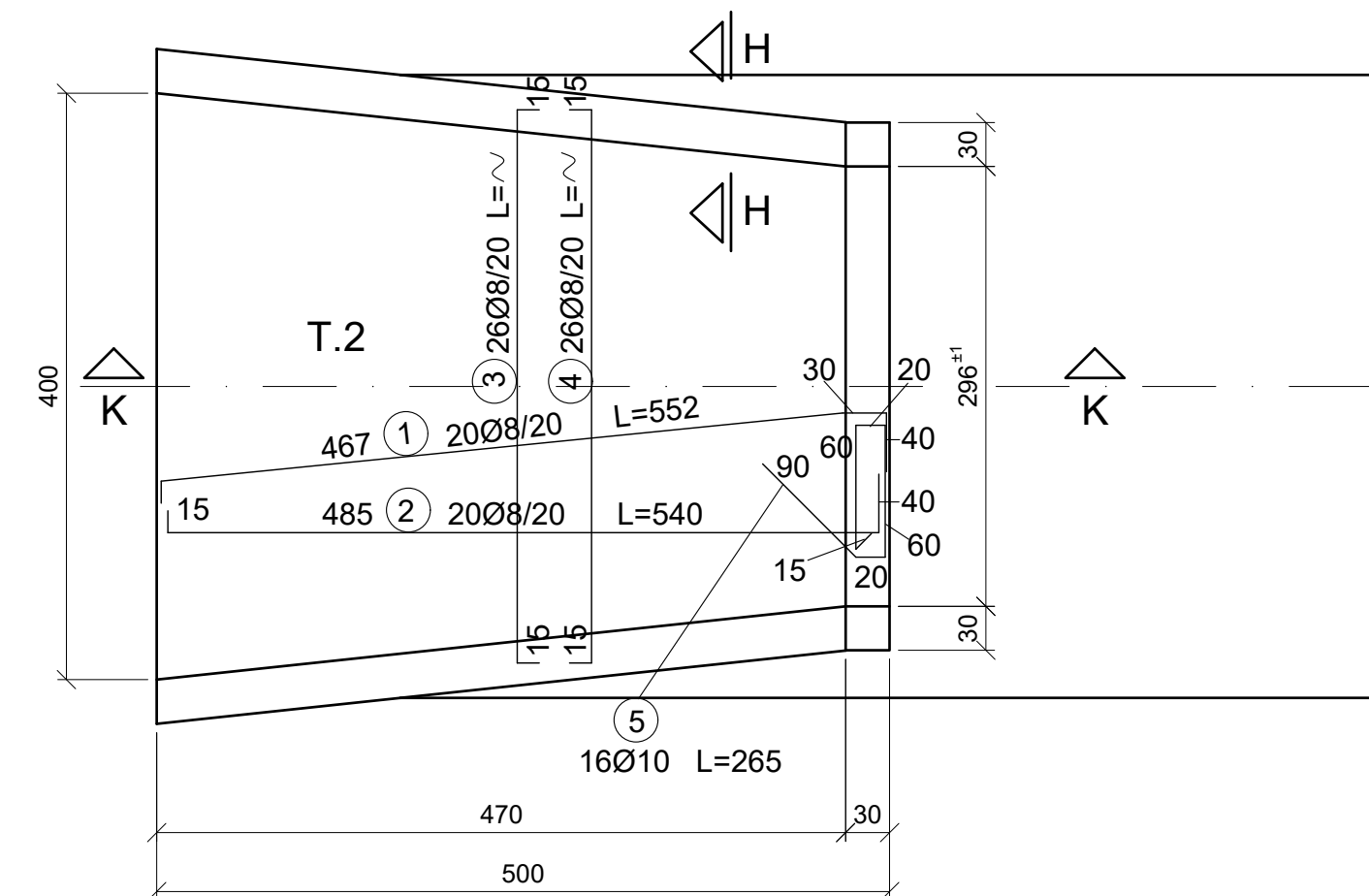


[illegible]

**GROUNDING DETAIL**  
 ▣ 3x30mm Galvanized bar 55m.

Galvanized bar detail

1.  3x30 L=1457 2 pcs  
2.  3x30 L=331 4 pcs  
3.  3x30 L=105 8 pcs  
4. Grounding stick or plate 1 pcs  
Ground insulation <5Ω  
All system will be fixed M8x20 galvanized bolts



WIRE MESH DETAILS											
POZ	Diameter (mm)	Shape	Length (cm)	Pcs	Ø8	Ø10	Ø12	Ø14	Ø16	Ø18	Ø20
1	Ø8		552	40	88.5						
2	Ø8		540	40	86.5						
3	Ø8		478.380	52	99.5						
4	Ø8		478.380	52	99.5						
5	Ø10		235	32		4.6					
6	Ø8		230.100	104	95.5						
7	Ø10		1077.5	21(ALL)		1330					
8			50x50	810(KOMPLEX)				40			
9	Ø8		420	20	34						
10	Ø8		420	20	34						
11	Ø8		420	20	34						
12	Ø8		420	20	34						
MATERIAL	TOTAL WEIGHT (kg)		TOTAL LENGTH (m)		1532	2230		33			
	UNIT WEIGHT (kg)		WEIGHT (kg)		0.395	0.617	0.888	1210	1580	2.080	2.400
	S 420a		20215		605.5	1376		40			

## IMPORTANT NOTICES

- |  |  |    |          |     |         |     |       |       |          |
|--|--|----|----------|-----|---------|-----|-------|-------|----------|
| 1. UNLESS OTHERWISE STATED, ALL DIMENSIONS ARE IN CM             |  |    |          |     |         |     |       |       |          |
| 2. MATERIAL/REINFORCED CONCRETE STEEL S420D                      |  |    |          |     |         |     |       |       |          |
| 3. MATERIAL/CONCRETE CLASS C30                                   |  |    |          |     |         |     |       |       |          |
| BLINDING CONCRETE CLASS C20                                      |  |    |          |     |         |     |       |       |          |
| 4. SOIL ALLOWABLE STRESS 20 kg/cm <sup>2</sup>                   |  |    |          |     |         |     |       |       |          |
| 5. NEIGHBORHOOD FIVEING CONCRETE WILL BE DONE BY CUSTOMER        |  |    |          |     |         |     |       |       |          |
| 6. THE MEASUREMENTS OF THE DIAGONALS WILL BE PRECISE             |  |    |          |     |         |     |       |       |          |
| 7. THE TOLERANCE OF MEASUREMENTS IS 1cm                          |  |    |          |     |         |     |       |       |          |
| 8. NEIGHBORHOOD WILL NOT BE DONE IF EXCEEDS MORE                 |  |    |          |     |         |     |       |       |          |
| 8. GROUNDING BAR WILL BE PLACED DURING CONSTRUCTION              |  |    |          |     |         |     |       |       |          |
| 9. WITHIN THE WEIGHBRIDGE PIT: EXCAVATION                        | 55m <sup>3</sup>   |    |          |     |         |     |       |       |          |
|  | 23m <sup>3</sup>   |    |          |     |         |     |       |       |          |
| PLAIN CONCRETE WITH  |  |    |          |     |         |     |       |       |          |
| MESH REINFORCEMENT   | 46m <sup>3</sup>   |    |          |     |         |     |       |       |          |
|  | ( EXCEPT OPERATOR ROOM   |    |          |     |         |     |       |       |          |
| STEELS   | <table border="1"> <tr> <td>Ø8</td> <td>605.50kg</td> </tr> <tr> <td>Ø10</td> <td>1376.6g</td> </tr> <tr> <td>Ø12</td> <td>420kg</td> </tr> <tr> <td>TOTAL</td> <td>2021.5kg</td> </tr> </table> | Ø8 | 605.50kg | Ø10 | 1376.6g | Ø12 | 420kg | TOTAL | 2021.5kg |
| Ø8   | 605.50kg   |    |          |     |         |     |       |       |          |
| Ø10  | 1376.6g  |    |          |     |         |     |       |       |          |
| Ø12  | 420kg  |    |          |     |         |     |       |       |          |
| TOTAL  | 2021.5kg   |    |          |     |         |     |       |       |          |
| CORNER PIECE IRON  | 1.80x80x3000mm 2PCS  |    |          |     |         |     |       |       |          |
| GALVANIZED BAR   | 3x30mm 55m   |    |          |     |         |     |       |       |          |
| 10. <input type="checkbox"/> THESE DIMENSIONS ARE VERY IMPORTANT |  |    |          |     |         |     |       |       |          |

DESCRIPTION
-------------

3x16m.JUMBO-S WEIGHBRIDGE(PITLESS)

ESIT<sup>®</sup>

www.esitscale.com