

## Comments for previous design:

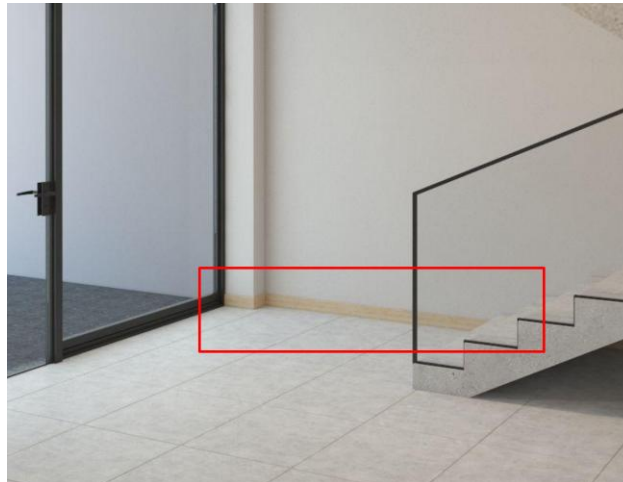
### Renders

1. Show built in fridge in the kitchen.
2. Make the glass railing without frame. It should be mounted on the side of the stairs with steel standoffs (see reference below):



a.

3. Change color of plinths – they should be same color as wall or white:



a.

4. As discussed before – please add some accent walls in the design. Accent may be color or decorative panel. All the office is too monochrome in the latest renders; In the excel

file you provided options of green paint and some decorative panels – please use them in design;

5. Please provide links of suggested materials (in excel file);
6. Remove decorative artificial plants from material selection;
7. Show lighting fixtures in renders;
8. Meeting rooms should have special design – accent can be ceiling, walls or furniture;



a.

9. WC – provided render for WCs is too grey, use warmer colors. Please see reference below:



a.